



## 29 Intervale Drive WYNDHAM VALE VIC

4 1 2

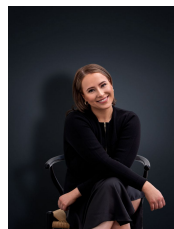
This comfortable family home is within close-proximity to local shops, schools and public transport, also within a 5-minute drive from Werribee CBD and Railway station, likewise Wyndham Vale Train Station take your pick!, and not to forget Iramoo Primary School is just 5 houses away.

**View** : <https://www.ypa.com.au/7362903>

Property features include;

- Three bedrooms all with built in robes
- Updated kitchen adjoins to meals area
- Spacious lounge room with bay window
- Central updated main bathroom with separate toilet and laundry
- Additional bungalow with two separate rooms, this could be used as 4th bedroom/ home office space

Extra features: stainless steel appliances, floorboards, large double shed, pergola area, split system cooling, wall



**Ali Dowling**  
0450 778 972