



265A Shaws Road WERRIBEE VIC

2 1 1

Presenting this conveniently positioned unit, which is sure to impress prospective renters whom are looking for a low maintenance & secure home! Within close proximity to public transport, shops & Werribees facilities.

Property features include;

Tidy two bedrooms, fitted with built in robes

Central bathroom

Internal laundry, with rear access

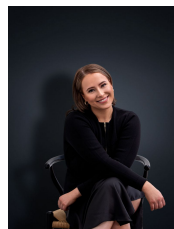
Lounge room upon entry

Open-plan kitchen & dining

Extra features include; Gas heating, modern stainless-steel cooking appliances, vertical blinds, floating floorboards, single lock-up garage, low maintenance gardens

(PHOTO ID REQUIRED AT OPEN FOR INSPECTION)

View : <https://www.ypa.com.au/7362919>



Ali Dowling
0450 778 972

At YPA Estate Agents 'our service will move you'