



47 Oneill Avenue HOPPERS CROSSING VIC

3 2 1

Located in the heart of Hoppers Crossing, central within the Mossfiel Estate. Situated within close-proximity to Pacific Werribee shopping centre, Hoppers Crossing train station/the public transport network, Aqua Pulse/Encore events centre, local primary/secondary schools, doctor/medical centres, in addition to hosting easy freeway access What more could you ask for!

Property Features:

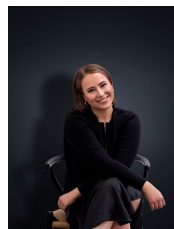
Three bedrooms fitted with built in robes, master tailored with walk in robe & en suite

Central bathroom inclusive of bathtub, along with separate internal laundry with rear access

Formal lounge room, in addition to open plan living & dining with Coonara fireplace

Tiled kitchen offering lots of cupboard space, overlooking

View : <https://www.ypa.com.au/7362972>



Ali Dowling
0450 778 972