



65 Tyrone Street WERRIBEE VIC

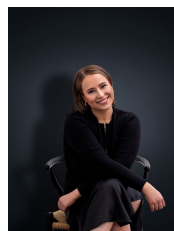
4 1

Set in a highly desirable location, within minutes of Werribees CBD, this light-filled residence provides an idyllic family home of space and comfort. Enjoy a rare lifestyle of convenience, only a short stroll to local shops, all forms of public transport, local parklands/walking tracks, simple/quick M1 freeway access, along with being zoned for a selection of Wyndhams finest primary/secondary schools.

View : <https://www.ypa.com.au/7362974>

Property Features:

- Four generous bedrooms fitted with quality floorboards
- Large family living zone, with separate kitchen & formal dining
- Upstairs offers a central main bathroom, whilst downstairs is tailored with a tidy powder room
- Great backyard offering a great deal of space, in addition



Ali Dowling
0450 778 972