



## 20 Tahlee Road TARNEIT VIC

3  2  2 

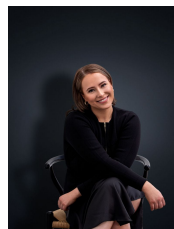
This ultra-modern family residence has been built with a touch of pride. North facing, whilst sensationally located in the ever so popular Tarneit Gardens Estate. Indulge your family with unrivalled lifestyle and convenience, short walking to Wyndham Village shopping centre, parklands, public transport and all level schools.

### Property Features:

- Three spacious bedrooms fitted with built in robes, master offering walk in robe & en suite
- Large open-plan lounge/living, leading to modern hostess kitchen & meals zone
- Central light-filled bathroom fitted with bath tub, alongside separate laundry with rear access
- Double car garage on remote, offering internal access

Additional Features: Alarm system for the security

View : <https://www.ypa.com.au/7363067>



**Ali Dowling**  
0450 778 972