



## 15 Memory Crescent WYNDHAM VALE VIC

4 2 2

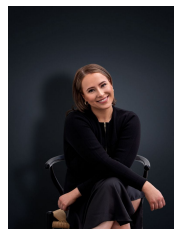
AVAILABLE FROM 13TH OF DECEMBER

Four bedrooms, master with walk in robe and en-suite  
Open plan kitchen, meals and living zone  
Additional lounge room  
Central main bathroom and generous laundry  
Double garage and alfresco dining area

Extra features: Ducted heating, feature lighting throughout, gas stove top cooking, dishwasher, built in feature shelving, walk in robes to all bedrooms, double vanity en-suite and much more.

Should you require any further information, please do not hesitate to contact both Ali Dowling (0450 778 972) & Rachelle Houghton (0424 263 506) directly.

View : <https://www.ypa.com.au/7363119>



**Ali Dowling**  
0450 778 972