



## 13 Willow Street WERRIBEE VIC

3 1 2

Situated on a large 557m2 (approx.) allotment and located in close proximity to Werribee train station, local schools/childcare centers, public transport, shops and walking distance to the Eagle Stadium, this home boasts a warm cozy feel that is hard to come by.

Property features include:

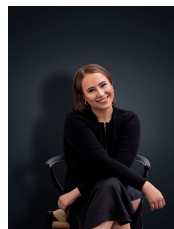
3 generous sized bedrooms, all of which include built in robes

Well-lit and equipped kitchen and updated flooring

Spacious pergola area/carport accompanied by a generous backyard

Extra features include: central bathroom, large laundry, traditional L shaped lounge area and evaporative air conditioning.

**View :** <https://www.ypa.com.au/7363156>



**Ali Dowling**  
**0450 778 972**