



15 Congregation Circuit WYNDHAM VALE VIC

4 2 2

Fall in love with this picture perfect, ex-display home!

Located within the highly sought-after Jubilee estate, within close proximity to Wyndham Vale train and Manor Lakes shopping centre. Surrounded by park lands, walking trails, along with the convenience of both primary/secondary schooling & childcare centres.

Property Features:

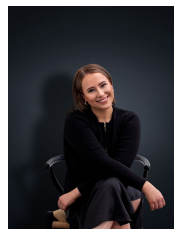
Four generous bedrooms, master tailored with private en suite & large walk in robe. Remaining bedrooms fitted with double build in robes.

Entertainers kitchen located at the hub of the home, inclusive of walk in pantry & gorgeous timber breakfast bar.

Central main bathroom, along with a separate toilet.

Light-filled family living zone, in addition to a secondary

View : <https://www.ypa.com.au/7363166>



Ali Dowling
0450 778 972