



## 16 Dutch Avenue WYNDHAM VALE VIC

4 2 2

Conveniently located with direct access to Ballan Road, living within the Lollipop Hill estate is easy! Especially when you're only a short distance to all the established amenities of Manor Lakes and with many more new facilities to come!

### Property Features:

Four generous fitted bedrooms, including master with walk in robe & en suite

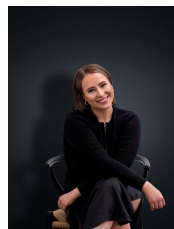
Bright central kitchen with stone bench-tops & walk in pantry

Large family & living zone, along with an additional secondary living/lounge room

Double car remote garage

This property also includes additional comforts such as gas ducted heating and split system cooling.

**View** : <https://www.ypa.com.au/7363193>



**Ali Dowling**  
**0450 778 972**