



## 104 Greaves Street North WERRIBEE VIC

3 1 2

Located in the most sought-after location of Werribee, this unique well looked after property is on approximately 670m<sup>2</sup> of land and only a minutes walk to Watton Street shops, cafes, restaurants, Werribee train station, Werribee race course and reputable schools.

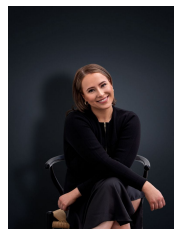
Property features include:

- Three spacious bedrooms
- Separate toilet
- Gas wall heater
- Lock up shed

Extra features: large backyard space with an extra shed and a spacious front living area.

(PHOTO ID REQUIRED AT OPEN FOR INSPECTION)

**View :** <https://www.ypa.com.au/7363208>



**Ali Dowling**  
**0450 778 972**