



## 8 Bellinger Crescent WYNDHAM VALE VIC

4 4 1

Nestled on an impressive allotment in the popular Presidents Park Estate, you're only 600m (approx.) to Presidents Park, 1.9km (approx.) to Manor Lakes Shopping Centre, 2.9km (approx.) to Wyndham Vale Train Station, 3.9km (approx.) to Werribee Train Station, and also within close proximity to public transport, child care, schools and local shops. It's not every day you find a home with this level of versatility!

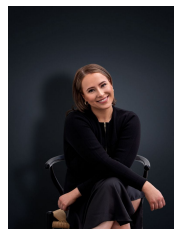
### Property Features:

Downstairs master bedroom, featuring a walk-in-robe and the convenience of an en suite

Hostess kitchen boasting ample bench/cupboard space, whilst appointed with quality stainless steel appliances and stone waterfall benchtops

Separate meals/dining zone, overlooking one of two large

**View :** <https://www.ypa.com.au/7363209>



**Ali Dowling**  
**0450 778 972**