



10 Advent Road WERRIBEE VIC

4 2 1

Nestled in the prestigious Riverwalk estate, steeped in modern and luxury flair. If you're looking for something chic yet contemporary, then this one's for you! Set in a location which assures tranquillity, offering close-proximity to Werribees CBD, Primary/Secondary schools, gorgeous parklands/walking tracks, along with convenient freeway access to both Melbourne and Geelong.

Property Features:

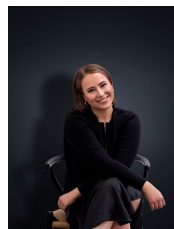
Four-bedroom free-flowing floor plan, master inclusive of both walk-in robe & private en suite

Central family kitchen, furnished with stainless steel appliances, overlooking adjoining meals/family living zone

Additional enclosed living zone/formal lounge (alternatively, can be used as 5th bedroom)

Main stylish bathroom fitted with bathtub, separate toilet

View : <https://www.ypa.com.au/7363215>



Ali Dowling
0450 778 972