



20 Principal Drive WYNDHAM VALE VIC

4 2 2

Offering the charm of a secluded, quiet neighborhood with the convenience of all the amenities a family requires.

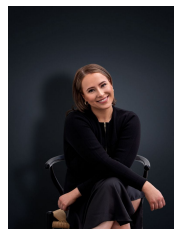
Located within the highly anticipated Wynbrook Estate, offering village-style living, tree-lined boulevards and abundant parklands. Only a short walk to Wyndham Vale train station along with the super-sized Manor Lakes Central, offering more than a dozen retailers, from beauty salons to fast food/groceries etc.

Property Features:

Four generous sized bedrooms, master tailored with walk in robe and en suite Remaining bedrooms fitted with built in robes

Sleek hostess kitchen fitted with stone bench tops and quality stainless steel appliances

View : <https://www.ypa.com.au/7363224>



Ali Dowling
0450 778 972