



34 Eltham Parade MANOR LAKES VIC

4 2 2

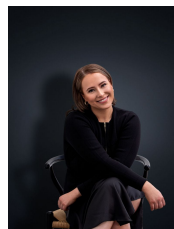
Proudly presenting this modern comfort with contemporary features, situated on a large corner block. Thoughtfully zoned, there is a place for every family member and/or guest. Just 40 minutes from Melbourne's CBD and five minutes from Werribee, along with multiple established facilities such as schools, a newly constructed shopping centre, train station, public transport options, community centre, established waterways and an open space for healthy outdoor living.

Property Features:

Four generous sized bedrooms. Master offering private en suite and walk in robe, remaining bedrooms fitted with double (mirrored) built in robes

Sleek open plan kitchen w/ gas cook top, dishwasher and plenty of bench space/storage

View : <https://www.ypa.com.au/7363241>



Ali Dowling
0450 778 972