

## 16 Henderson Drive Tarneit VIC

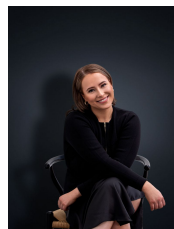
4 2 2

Perfectly positioned within a brand-new pocket This family friendly home is sure to tick all of the boxes! Only a short drive to Pacific Werribee, in addition to having nearby freeway access, this home places you in a dominant and central location convenient for all family members.

### Property Features:

- Four generous sized bedrooms. Master offering private en-suite with walk in robe
- Remaining three bedrooms are tailored with double built in robes, whilst being serviced by a main central bathroom & separate toilet
- Contemporary kitchen & meals, offering an abundance of cupboard / bench space, in addition to a stylish tiled splash back w/ stainless steel appliances
- Dedicated lounge/living zone adjoined to kitchen & meals

**View :** <https://www.ypa.com.au/7363272>



**Ali Dowling**  
**0450 778 972**