



## 34 Alfred Road Werribee VIC

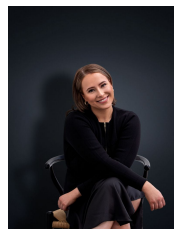
4 2 2

This beautifully presented, brand new four-bedroom home is sure to tick all the boxes. Set in a location which assures tranquillity, offering close proximity to Werribee's CBD, Primary/Secondary schools, gorgeous parklands/walking tracks, along with convenient freeway access to both Melbourne and Geelong.

### Property Features:

- ? Four spacious bedrooms - Master tailored with en suite & walk in robe, remaining bedrooms fitted with double built in robes
- ? Free-flowing floor plan, open-plan living & dining zone
- ? Entertainers kitchen offering plenty of storage & walk in pantry
- ? Additional living/formal lounge off kitchen & meals
- ? Central main bathroom with separate toilet

**View** : <https://www.ypa.com.au/7364107>



**Ali Dowling**  
**0450 778 972**