

33 Hodgson Avenue Tarneit VIC

4 🚗 2 🚗 2 🚗

Located just 28km west of Melbourne's CBD, Habitat on Davis Creek is one of the fastest growing and most popular communities in Tarneit. Set on the banks of a natural waterway, offering choices in public transport (including the recent Tarneit train station), in addition to three convenient town centres nearby.

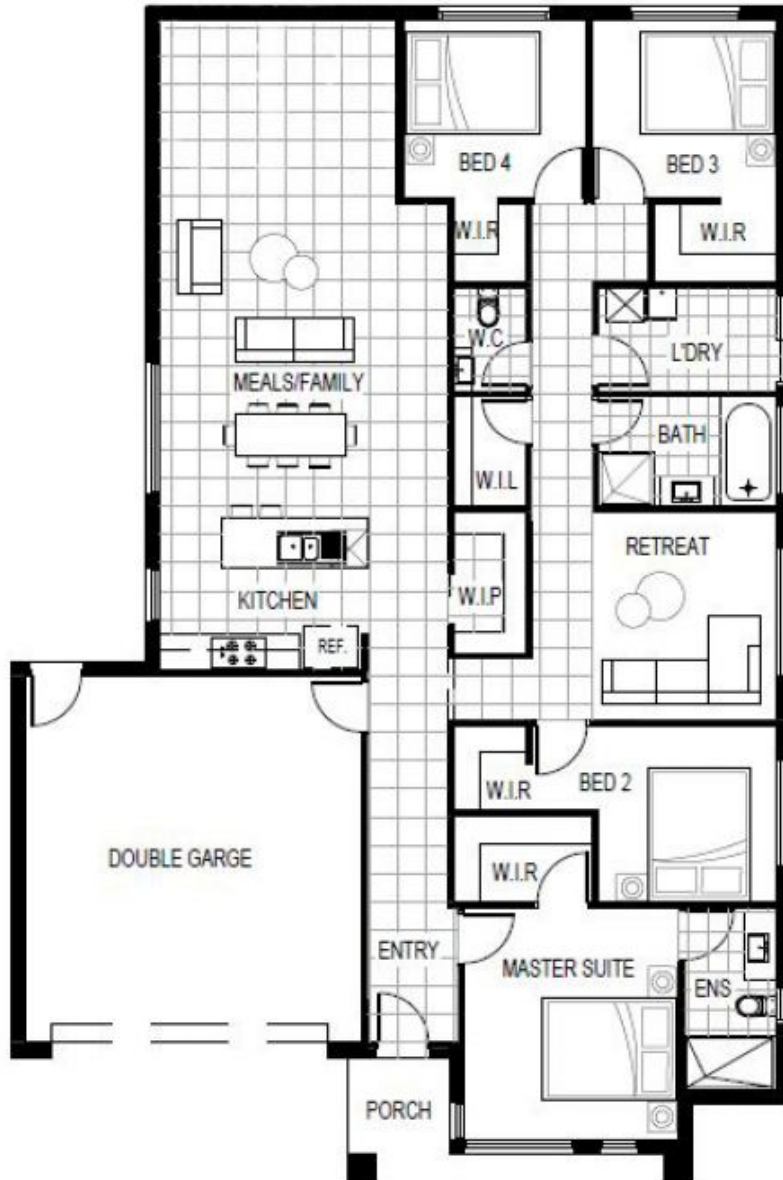
Quality education is easy to find, offering great primary and secondary schooling, along with multiple kindergartens / childcare centres.

The recently opened neighbourhood park on Hodgson Avenue is located in the centre of Habitat and is almost a hectare in area. The park offers expansive green space designed for year-round enjoyment. In addition to the large grassed open areas and barbecue facilities, it features picnic tables and shelters, as well as an informal kids' bike

View : <https://www.ypa.com.au/7364116>



Ali Dowling
0450 778 972



GROUND FLOOR