



## 1 Feijoa Court Werribee VIC

3 2 2

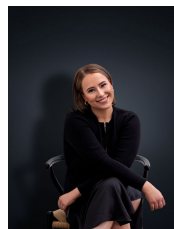
This three-bedroom home is located perfectly in the sought-after Orchid Park estate, within walking distance to park/kids playground and a short drive to schools, shops and train station

**View :** <https://www.ypa.com.au/7364143>

Property features include:

- ? Three good sized bedrooms, master with ensuite and walk-in robes
- ? Formal Lounge
- ? Open plan kitchen with dishwasher, meals & living area
- ? Study nook
- ? Outdoor entertaining pergola area

Other features include: Double remote garage with internal access, ducted gas heating, evaporative cooling, shed and established gardens.



**Ali Dowling**  
0450 778 972