



15 Ribblesdale Avenue Wyndham Vale VIC

3 1 2

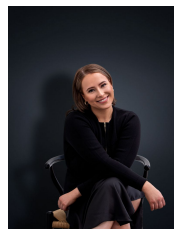
This home is truly a rare find situated within walking distance to schools, kindergartens and childcare facilities, local shops, walking tracks and transport this home offers it all.

View : <https://www.ypa.com.au/7364163>

Property features include:

- ? Three bedrooms, two with built-in robes
- ? Two separate living areas
- ? Modern kitchen with gas cooking
- ? Central main bathroom with separate laundry
- ? Covered entertainment area
- ? Low maintenance established gardens in large backyard

Extra features: ducted heating & cooling, double carport and single lock up garage, alarm system and security cameras and much more.



Ali Dowling
0450 778 972