



## 156 Rosella Avenue Werribee VIC

3 1 4

PLEASE REGISTER YOUR INTEREST IN ATTENDING A PRIVATE INSPECTION BY CLICKING "REQUEST AN INSPECTION", THEN SELECT THE AVAILABLE TIME THAT BEST SUITS YOU.

View : <https://www.ypa.com.au/7364175>

FACE MASKS ARE REQUIRED TO BE WORN BY ALL INSPECTION ATTENDEES.

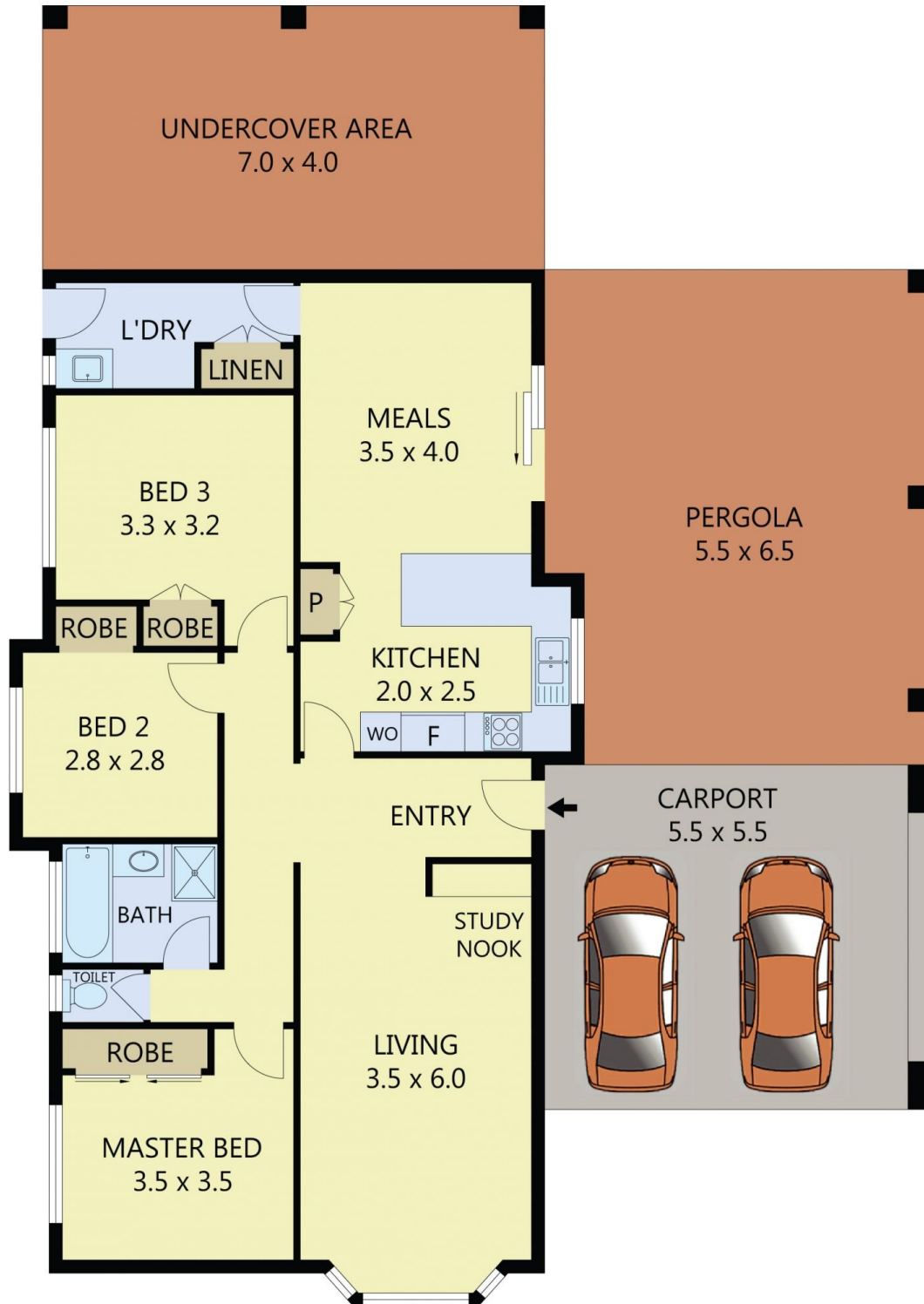
This home is truly a rare find situated within walking distance to Werribee Pacific Shopping Centre (1km), local parks, bike tracks, reputable schools and bus stops this home is perfect for those looking for a convenient lifestyle.



**Ali Dowling**  
0450 778 972

Property features include:

- ? Three spacious bedrooms with built in robes
- ? Central bathroom



UNDERCOVER AREA	-	28m <sup>2</sup>
CARPORT	-	30m <sup>2</sup>
PERGOLA	-	42m <sup>2</sup>
RESIDENCE	-	109m <sup>2</sup>
TOTAL AREA	-	209m <sup>2</sup>



Scale in metres. Indicative only. Dimensions are approximate. All information contained herein is gathered from sources we believe to be reliable. However we cannot guarantee its accuracy and interested parties should rely on their own enquiries.

# 156 Rosella Avenue, Werribee