



4/11B Edgar Street Werribee VIC

2 1 1

This clean and spacious unit is centrally located within 1.5 kilometres to Werribee CBD, public transport, medical centre and shops, primary schools and much more.

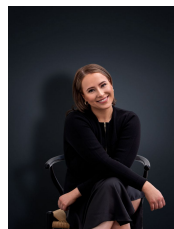
View : <https://www.ypa.com.au/7364183>

Property features include:

- ? Two large bedrooms, with built in robes
- ? Spacious living/meals area upon entry
- ? Tidy kitchen, with plenty of storage
- ? Central bathroom, with separate toilet
- ? Private courtyard

Other features include: polished timber floorboards, modern electric cooking appliances, electric heating and garden shed

Please book an inspection time and/or enquire using the



Ali Dowling
0450 778 972