

2B Tillbush Close Hoppers Crossing VIC

3 2 1

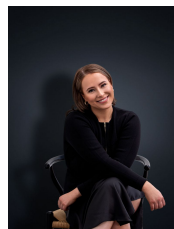
Nestled in the quiet and well established Derrimut Heath pocket of Hoppers Crossing, this contemporary and stylish townhouse sits only a short drive to Hogan's Corner Shopping Centre, Hoppers Crossing Station, Pacific Werribee & reputable schools.

The home offers an open plan design creating a generous space in an exclusive location surrounded by parklands, bike and walking tracks and local shops.

Property features include:

- ? Master bedroom with ensuite and walk in robe
- ? Two remaining spacious bedrooms with built in robes
- ? Open plan kitchen/Meals and family living arrangement
- ? Separate powder room
- ? Landscaped and easy to maintain gardens

View : <https://www.ypa.com.au/7364190>



Ali Dowling
0450 778 972