



## 10 Lark Court Werribee VIC

3 2 1

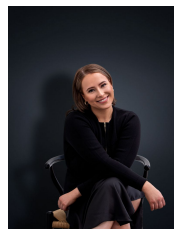
Positioned on approximately 300sqm of land, this gorgeous home filled with character and charm offers a great opportunity for a small family. With Pacific Werribee only approximately 1.8km away and local amenities in every direction such as reputable schools, shops, freeway access, hospitals, walking/bike tracks and the Werribee river, this home certainly ticks all the boxes.

The property itself offers;

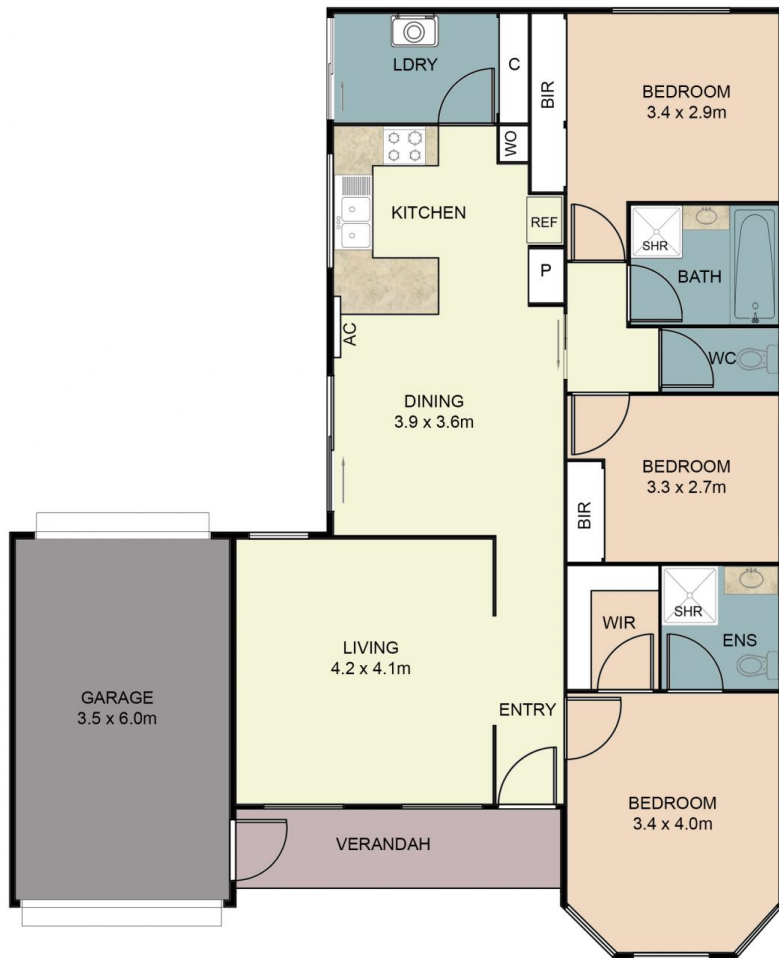
- ? Decent sized master bedroom with en-suite
- ? Large open plan kitchen and meals area
- ? Central bathroom with bathtub and a separate toilet

Additional features include: Separate lounge room, single garage, ducted heating and air conditioning, large backyard space and floorboards/carpet throughout.

View : <https://www.ypa.com.au/7364191>



**Ali Dowling**  
0450 778 972



## FLOOR PLAN

This floor plan including furniture, fixture measurements and dimensions are approximate and for illustrative purposes only. Boxbrownie.com gives no guarantee, warranty or representation as to the accuracy and layout. All enquiries must be directed to the agent, vendor or party representing this floor plan.

Floor Area - 139 sqm

10 Lark Court, Werribee