



63A High Street Werribee VIC

3 2 1

This stunning townhouse is perfectly located! Within easy reach to Werribee's most popular attractions, you are within walking distance to Werribee's CBD, train station/public transport, along with plenty of Café's, restaurants, shops & reputable schools.

Property features include:

- ? Three bedrooms fitted with mirrored built in robes & master with en-suite
- ? Bright open plan kitchen/dining & living
- ? Central bathroom, along with separate powder room
- ? Low maintenance grounds & gardens
- ? Single lock up garage on remote

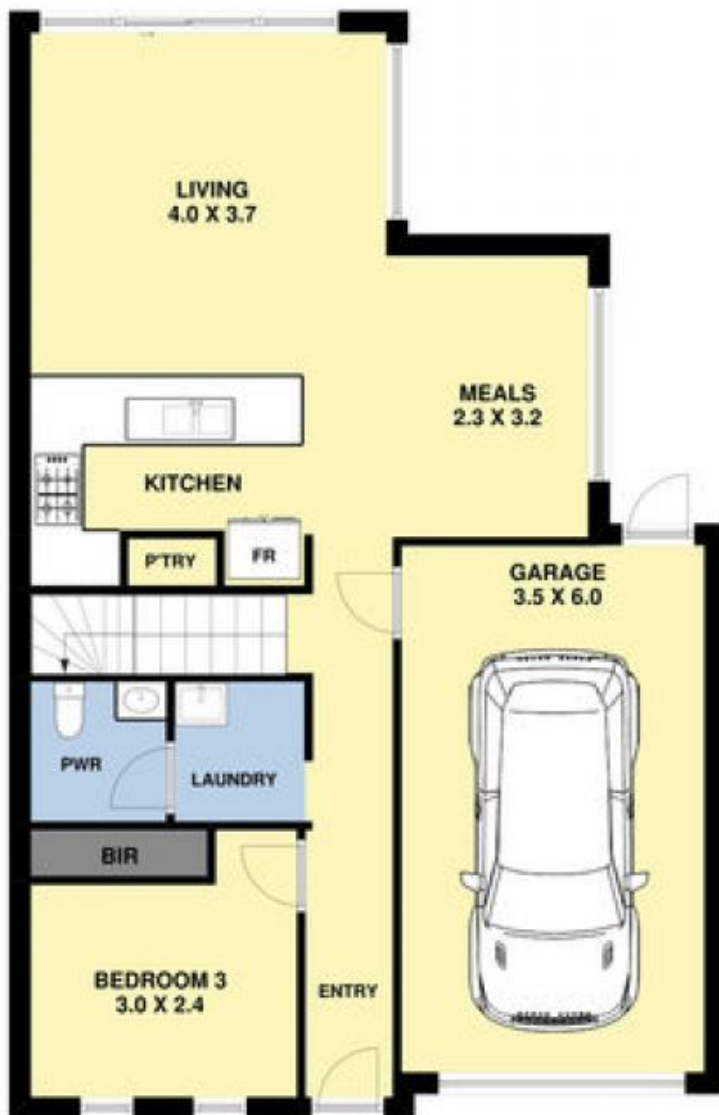
Extra features; Ducted heating, split system cooling, modern gas cooktop, dishwasher, roller blinds, garden

View : <https://www.ypa.com.au/7364200>



Ali Dowling
0450 778 972

63A High Street, Werribee



Ground Floor



First Floor



ypa