

1A Hodge Street Werribee VIC

3 2 1

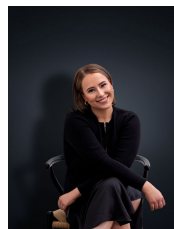
This sensational unit is perfect for the for anyone seeking a low maintenance lifestyle on the south side of Werribee. Located Walking distance to Watton Street, the Werribee River and its walking tracks, the location really sells itself.

View : <https://www.ypa.com.au/7364210>

Property features:

- ? Three bedrooms with built in robes
- ? Master bedroom with walk in robe and en-suite
- ? Open plan living/kitchen/meals
- ? Central bathroom

Extra features include: high ceilings, ducted heating, stainless steel appliances, stone bench tops and single lock up garage. With established landscaping this magnificent home will meet your every need.



Ali Dowling
0450 778 972