



24 Trent Close Werribee VIC

3 2

View : <https://www.ypa.com.au/7364218>

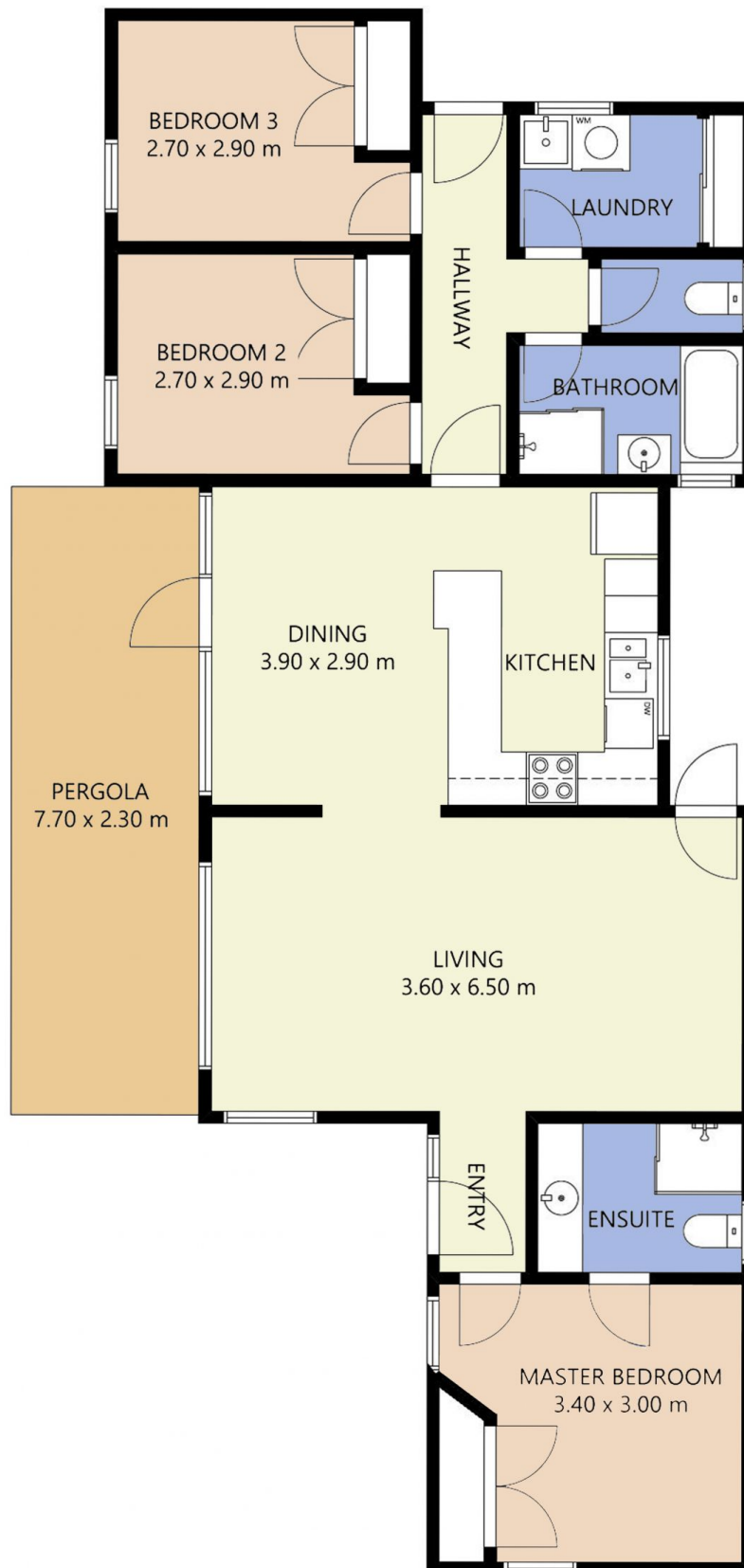
Located smack bang in the centre of Werribee, this dynamic property offers all the features that you could be wanting in a home. Immaculately presented, this property is positioned within very close distance to loads of local amenities including; Pacific Werribee (Approx 2.1km), Werribee CBD & Train Station (Approx 2.5km), Reputable schools including Heathdale Christian College, Bethany & Westgrove Primary School, public transport & parklands.

Property features:

- ? Master bedroom with ensuite, built in robes featured in all three bedrooms
- ? Massive living area upon entry
- ? Open plan kitchen/dining arrangement with loads of cupboard space & dishwasher



Ali Dowling
0450 778 972



FLOOR PLAN IS PROVIDED AS INDICATIVE LAYOUT ONLY, MEASUREMENTS ARE NOT AVAILABLE, FLOORPLAN IS NOT TO SCALE.
NO GUARANTEES PROVIDED ON ACCURACY

24 Trent Close, Werribee