



32 Tulsi Avenue Werribee VIC

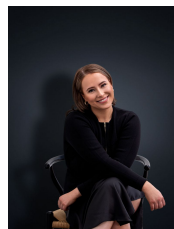
4 2 2

PLEASE REGISTER YOUR INTEREST IN ATTENDING A PRIVATE INSPECTION BY CLICKING "REQUEST AN INSPECTION", THEN SELECT THE AVAILABLE TIME THAT BEST SUITS YOU.

View : <https://www.ypa.com.au/7364233>

FACE MASKS ARE REQUIRED TO BE WORN BY ALL INSPECTION ATTENDEES.

Perfectly positioned within the sought-after Riverwalk Estate - You will be immediately welcomed into this vibrant, established community w/ a village lifestyle set against the scenic Werribee River, enriched by abundant green parklands and waterways, only minutes from the future Federation Trail.



Ali Dowling
0450 778 972

Quality education for every age is within easy reach, w/ walking distance to Riverwalk's Primary School, offering