



## 12 Clay Avenue Hoppers Crossing VIC

3 1 1

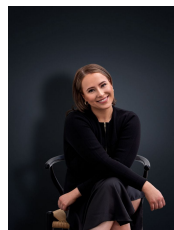
Situated in the ever so popular Mossfiel estate of Hoppers Crossing and set on a massive 586m2 block, the home is located close to all the amenities you will ever want and need. Pacific Werribee is located (approx. 1.4km) away and Hoppers Crossing train station is a short 5-minute drive away (approx. 1.9km). The home is also within walking distance to reputable schools including Mossfiel Primary, Hoppers Crossing Secondary School and St Peters Catholic Primary School. Parklands, sporting complexes and local shops are also very close by.

### Property features:

- ? Three spacious bedroom all with built in robes
- ? Large living room with gas fireplace
- ? Kitchen with stainless steel appliances and adjoining meals area

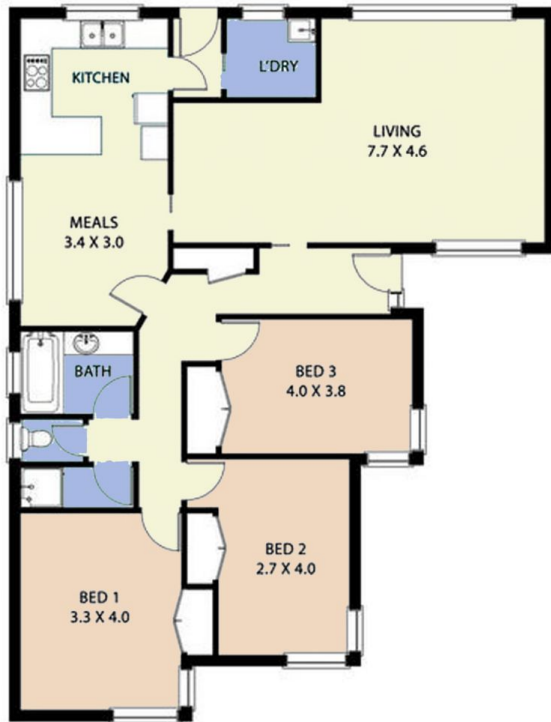
**Land Size** : 586 sqm

**View** : <https://www.ypa.com.au/7364279>



**Ali Dowling**  
0450 778 972

# 12 Clay Avenue, Hoppers Crossing



FLOOR PLAN IS PROVIDED AS INDICATIVE LAYOUT ONLY, MEASUREMENTS ARE NOT AVAILABLE, FLOORPLAN IS NOT TO SCALE.  
NO GUARANTEES PROVIDED ON ACCURACY