



10 Evison View Werribee VIC

2 2 1

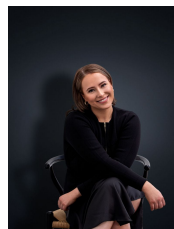
This contemporary two-storey townhouse has all the perks needed to live comfortably, yet also in style! The heart of Harpley Estate - Located just 3km from Werribee's CBD and 35km south-west of Melbourne, an easy escape from the city w/ direct access via the Princes Freeway.

Residents enjoy natural beauty at their doorstep (range of walking/cycle paths, traversing wetlands, parklands & playgrounds), whilst living walking distance from shops, schools, recreation and more.

Property Features:

- ? The heart of the home - Downstairs is centred around family living w/ open plan kitchen, living & dining
- ? Upon entry you'll find a tidy study space, ideal for an at-home work office

View : <https://www.ypa.com.au/7364286>



Ali Dowling
0450 778 972