



19 Hodge Street Werribee VIC

3 1 1

Located in the highly sought-after south side of Werribee, this quaint home is within close proximity to the Werribee CBD, Werribee Train Station, multiple Primary and Secondary schools, local shops and Riverside walking trails.

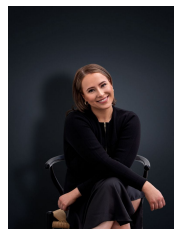
Property features:

- ? Built in robes featured in all three bedrooms
- ? Kitchen with an abundance of storage; overlooking the meals area
- ? Central bathroom with separate toilet

Additional features include: separate laundry, ducted heating, rotary clothesline and a secure undercover carport.

*Appointments are conducted in accordance with the latest

View : <https://www.ypa.com.au/7364290>



Ali Dowling
0450 778 972