



19 Seine Close Werribee VIC

3  2  2 

This three-bedroom home is perfect for a new family! Located in a central Werribee location this home is close to Werribee CBD, Pacific Werribee Shopping Centre, Westgrove Primary School, Wyndham Central College, walking tracks & parklands.

View : <https://www.ypa.com.au/7364313>

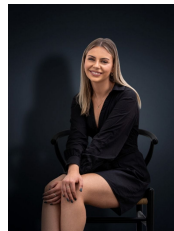
Property Features:

- ? Ducted Heating & Split System
- ? Open plan kitchen, living & dining
- ? Central laundry with separate toilet
- ? Master bedroom with ensuite and walk in wardrobe
- ? Built in robes to remaining bedrooms

Extra Features: Gas cooktop, electric oven, dishwasher, central bathroom, well maintained and tidy gardens

*Appointments are conducted in accordance with the latest government guidelines. Please check in via the QR code upon arrival, wear a mask, use hand sanitiser, refrain from touching any items/fixtures/doors and provide your contact details.

Please note that in order to attend any open for inspection, you must be fully vaccinated. Please contact the agent to arrange a private inspection if you are not fully vaccinated. We appreciate your cooperation.*



Kiarah Bagnato
0449 941 895