



## 1 Waterside Close Hoppers Crossing VIC

3  2  2 

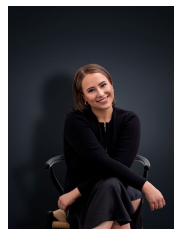
This beautiful home is ideally located opposite parklands and just a short drive to Wyndham Village Shopping Centre, Local Schools and Childcare Centres.

Property features include:

- ? Three bedrooms, master with ensuite and walk-in robe
- ? Kitchen with Stainless Steel appliances including dishwasher
- ? Separate Lounge
- ? Central main bathroom with separate laundry
- ? Undercover pergola and decking area
- ? Side access to large shed with side roller door

Extra features: floorboards, ducted heating, evaporative cooling, cubby house, low maintenance gardens and much more

View : <https://www.ypa.com.au/7364386>



**Ali Dowling**  
0450 778 972