



## 19 Fatham Drive Wyndham Vale VIC

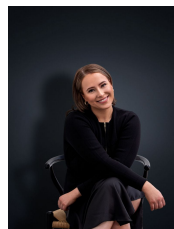
4 2 2

Located within a short distance to Manor Lakes Shopping Centre, local shops, schools, public transport within a few minutes' drive to Werribee CBD, Railway station and Wyndham Vale Train Station also in close proximity - so take your pick!

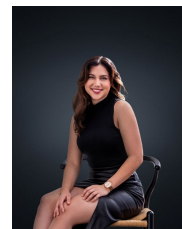
The well-presented home offers all the bells & whistles you could be looking for including;

- ? Four spacious bedrooms
- ? Grande Master with ensuite and walk in robe
- ? Remaining bedrooms all with built in robes
- ? Open plan kitchen/meals and family living arrangement
- ? Kitchen offers plenty of cupboard space, a combination of gas & electric cooking appliances and a dishwasher
- ? Unrestricted side access
- ? Alfresco entertaining area looking over the entire

**View** : <https://www.ypa.com.au/7364442>



**Ali Dowling**  
0450 778 972



**Trinity Osorio Schwarz**  
0426 356 739