



## 42 Margaret Street Werribee VIC

3 1 2

Pretty as a picture! Updated throughout - Captivating period charm and a muted colour palette. Delivering a first-class lifestyle with its versatile floorplan and modern features, this property has been distinctively designed for leisure & entertaining thanks to the inclusion of generous living zones inside and out.

### Property Features:

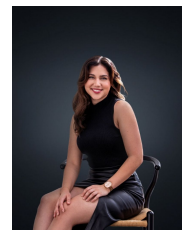
- ? Three generously sized bedrooms (carpeted) tailored with built in robes
- ? Oversized kitchen & meals, combining storage / practicality to create a chefs dream!
- ? Stainless-steel double electric oven / cooking appliances & dishwasher
- ? Multiple light-filled living zones along with an additional study area (w/ access to rear)

**Land Size** : 699 sqm

**View** : <https://www.ypa.com.au/7364445>



**Ali Dowling**  
0450 778 972



**Trinity Osorio Schwarz**  
0426 356 739

