



24 Canadian Avenue Werribee VIC

4 2 2

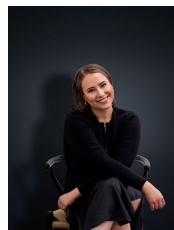
Positioned within Cornerstone estate - A community that's ready for you!
A stone's throw from everything you need. A short drive to Wyndham Vale Square / Wyndham Vale Train Station, along with Watton Street & Pacific Werribee Shopping Centre.

Cornerstone's state-of-the-art playgrounds, peaceful waterway and colour-burst landscaping create the perfect backdrop for all.

Property Features:

? Four generously sized bedrooms; Master features walk-in robe and private en suite
? Remaining bedrooms fitted with built in robes, whilst serviced by a light-filled central bathroom w/ separate toilet

Land Size : 350 sqm
View : <https://www.ypa.com.au/7364457>



Ali Dowling
0450 778 972



Trinity Osorio Schwarz
0426 356 739