

4 Supple Street Werribee VIC

4 2 2

An exclusive brand-new residence, positioned within a central pocket of Werribee -The ever so popular Riverwalk Estate. This stylish, light-filled home is perfect for anyone seeking a low maintenance lifestyle. Quality education for every age is within easy reach, only a short stroll to Riverwalk Primary School (P-6) and Aspire Early Learning & Kindergarten. Commuting to Melbourne CBD and/or Geelong is easy, with direct access to the M1 Princes Freeway, or alternatively, utilising the public transport network, with the Werribee Train Station being 8 minutes from home.

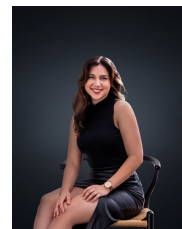
Property Features:

- ? Generous four bedrooms, master tailored with large built-in robe & en suite
- ? Remaining bedrooms fitted with double built in robes,

View : <https://www.ypa.com.au/7364461>



Ali Dowling
0450 778 972



Trinity Osorio Schwarz
0426 356 739