

## 9 Gala Avenue Wyndham Vale VIC

3 2 2

Located within the highly anticipated Wynbrook Estate, offering village-style living, tree-lined boulevards and abundant parklands. Only a short walk to Wyndham Vale train station along with the super-sized Manor Lakes Central, offering more than Forty retailers.

### Property Features:

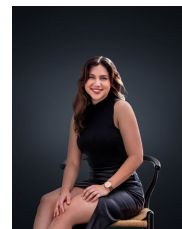
- ? Three generous sized bedrooms, master tailored with walk in robe and ensuite - Remaining bedrooms fitted with double built in robes
- ? Sleek hostess kitchen fitted with stone bench tops and quality stainless steel appliances
- ? Open plan living and dining
- ? Central main bathroom, along with separate toilet
- ? Double remote garage w/ internal & rear side access

Additional features include; Modern day comforts such as ducted heating, dishwasher, spacious pantry, neutral colour scheme, along with low-maintenance landscaped front &

**View :** <https://www.ypa.com.au/7364465>



**Ali Dowling**  
0450 778 972



**Trinity Osorio Schwarz**  
0426 356 739