



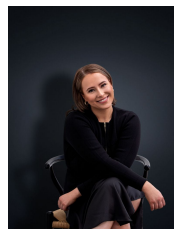
1/30 Tarneit Road Werribee VIC

3 1 1

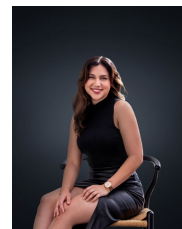
Full of character this beautiful home is situated approximately 850m to Werribee Train Station and is minutes from Werribee CBD with Shops, Cafes & Restaurants. The original home boasts beautiful original floorboards, Art Deco decorative ceilings and decorative corning throughout with loads on offer including.

- ? Three large spacious bedrooms all with built in robes
- ? Central bathroom
- ? Large living room upon entry
- ? Spacious updated kitchen with gas cooking appliances
- ? Decked outdoor entertaining area and low maintenance gardens
- ? Off street parking by way of a carport
- ? Ducted heating and evaporative cooling

View : <https://www.ypa.com.au/7364466>



Ali Dowling
0450 778 972



Trinity Osorio Schwarz
0426 356 739

(PHOTO ID REQUIRED AT OPEN FOR INSPECTION)