



## 20 Lutine Circuit Point Cook VIC

4 2 2

A desirable village lifestyle, all within the thriving western suburbs of Melbourne - An ideal location to make the most of Point Cook's wealth of amenities.

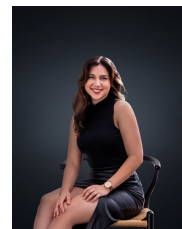
**View :** <https://www.ypa.com.au/7364468>

### Property Features:

- ? Four spacious bedrooms; Master features luxurious ensuite w/ double "his & her" vanities, oversized shower, separate toilet and walk-in robe
- ? Remaining bedrooms tailored with double built in robes, whilst serviced by a light-filled central bathroom w/ separate toilet / powder room across the hall
- ? Hostess, contemporary kitchen - Offering ample bench/cupboard space, equipped with quality SMEG appliances and a butler's pantry
- ? Open-plan living w/ adjoining meals zone
- ? Additional living space and/or separate rumpus room



**Ali Dowling**  
0450 778 972



**Trinity Osorio Schwarz**  
0426 356 739