



## 8/9 Market Road Werribee VIC

2 1 1

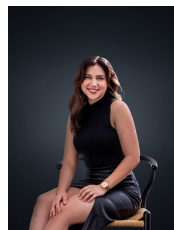
Perfectly situated in the heart of Werribee CBD and within walking distance to all amenities including public transport, schools, shops and cafes is this neat and tidy two-bedroom unit, offering affordability while not compromising on location.

### Property features include:

- ? Two bedrooms, fitted with built in robes
- ? Spacious kitchen, meals & dining
- ? Central bathroom
- ? Single lock up garage
- ? Enclosed private courtyard

Extra features include timber flooring, gas wall heating & air conditioner.

**Land Size** : 120 sqm  
**View** : <https://www.ypa.com.au/7364470>



**Trinity Osorio Schwarz**  
 0426 356 739



**Ali Dowling**  
 0450 778 972