



39 Mattingley Cres Brunswick West VIC

2 2 1

This immaculate, two storey residence is situated in a highly convenient and sought after location within moments to public transport and popular eateries. An idea setup for young couples, busy professionals or astute downsizers after that low maintenance lifestyle in a most enviable location.

Comprising of two spacious bedrooms with built in robes, open plan kitchen, meals and lounge, 2 bathrooms, large study area, rear entertaining area, secure lock up garage via a side drive and a unique spiral staircase.

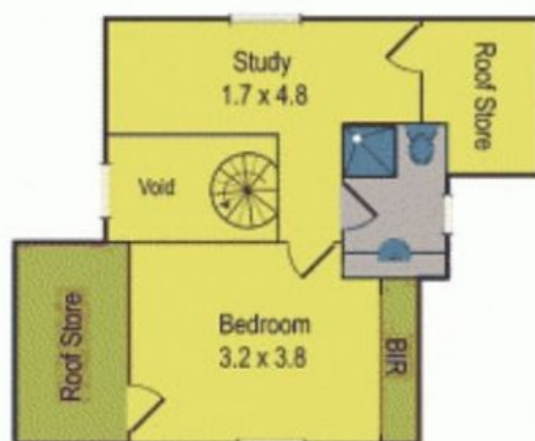
This complete package is a short stroll to all that Melville Road has to offer, public transport, freeway access, the Moonee Ponds Creek Trail, the vibrant and diverse Sydney Road, highly sought after schooling options and ample parkland and only minutes to the CBD.

View : <https://www.ypa.com.au/7365797>

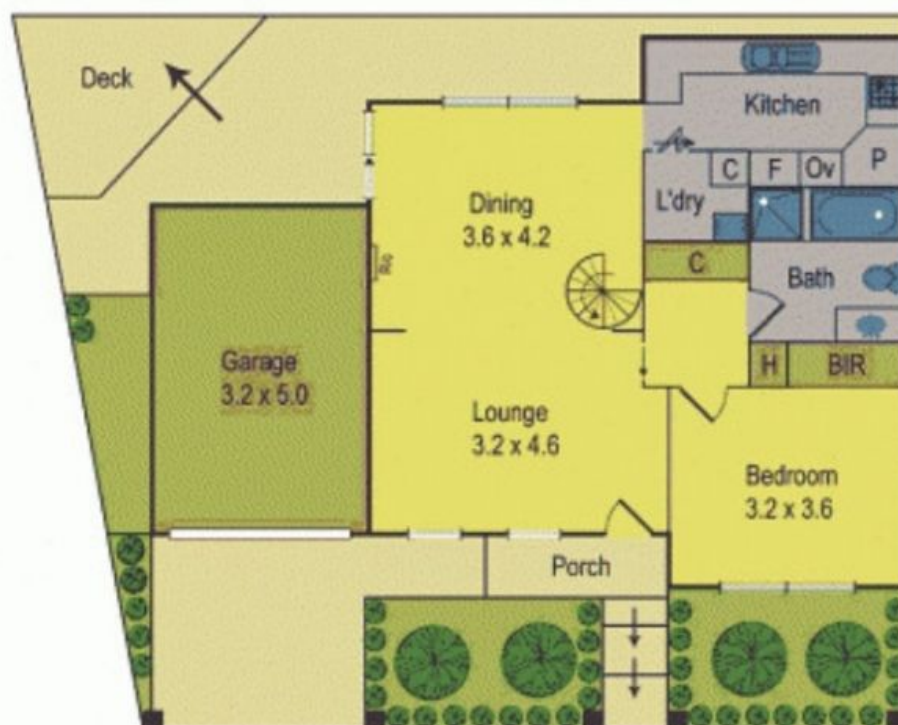


Carla Primiano
0407 183 331

39 Mattingley Street, Brunswick West



First Floor



Ground Floor