



5 Donald Street BACCHUS MARSH VIC

4 3 8

Situated in a quiet, highly-desired and very central location, within easy walking distance to the heart of town, this utterly unique, completely renovated weatherboard masterpiece is an absolute must see iconic piece of real estate.

Demanding with a beautiful and bold facade, set back behind a picket fence on a large 907m² (approx.) block, this extensive, ready-to-accommodate property (Circa. 1910) comes with a long list of features, high quality inclusions and a range of options for all buyers.

Make no mistake, this stunning, awe-inspiring property is like nothing you've ever seen. Truly, it's as if you've stepped onto the pages of a happily-ever-after fairytale-story book!

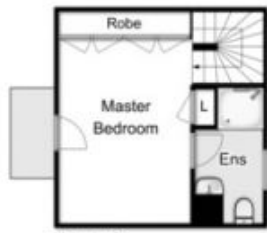
Showcasing an eclectic mix of functional, contemporary and stylish, upcycled and beautiful, one-of-a-kind handmade pieces, with exceptional attention paid to every single detail. It's truly impressive - styled to perfection with

Land Size : 918 sqm

View : <https://www.ypa.com.au/7382908>



Shane O'Brien
0431 766 082



First Floor



Ground Floor



(Bungalow & Garage
Not In Accurate Positions)



5 Donald Street, Bacchus Marsh

every attempt has been made to ensure the accuracy of the floor plan contained here, measurements of doors, windows, rooms and any other items are approximate and no responsibility is taken for any error, omission, or mis-statement. an is for illustrative purposes only and should be used as such by any prospective purchaser. The services, systems and appliances shown have not been tested and no guarantee as to their operability or efficiency can be given.

