



138 Gisborne Road DARLEY VIC

4 2 2

This delightful home offers excellent value to the home buyer or investor. Consisting of 4 bedrooms with built in robes, study an open plan kitchen with ample bench space and storage. Adjoining the kitchen is the meals area followed by the spacious lounge.

Extras to the property split systems for all your heating and cooling, lockup garage, garden sheds. Set on an approx.650m2 allotment, plenty of room for the kids to play or the animals to roam.

Conveniently located within a short walk to, schools, shops, public transport. Call today to inspect
(Photo ID is Required at all Open For Inspections)

At YPA Bacchus Marsh Our Service Will Move You

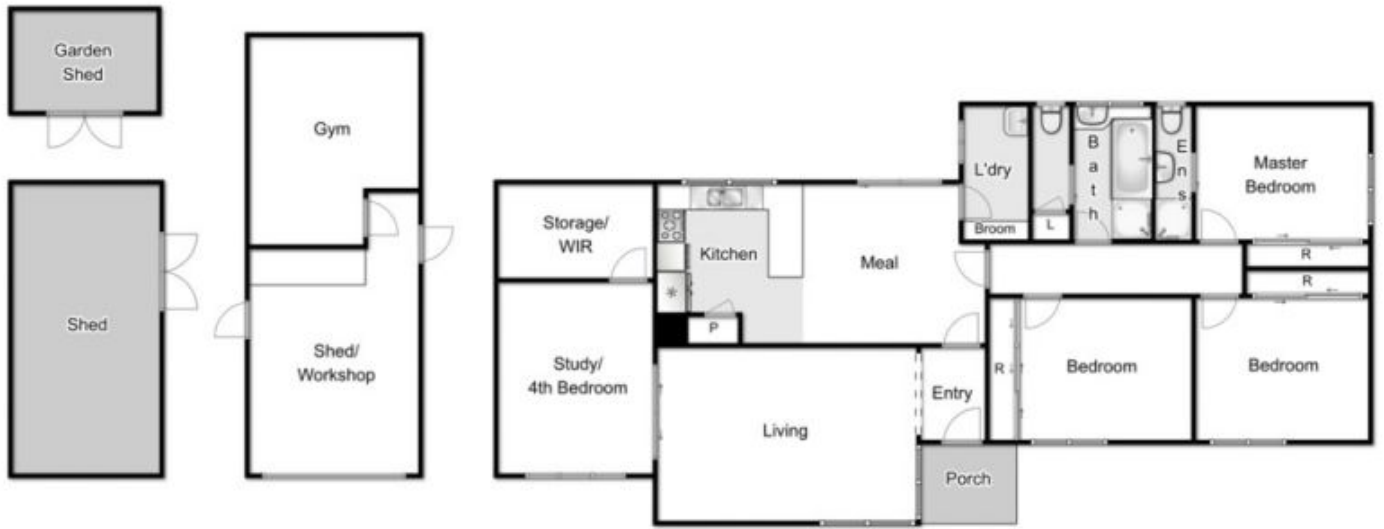
DISCLAIMER: Every precaution has been taken to establish the accuracy of the above information but it does

Land Size : 650 sqm

View : <https://www.ypa.com.au/7383022>



Vickie Ramon
0403 194 621



138 Gisborne Road, Darley

every attempt has been made to ensure the accuracy of the floor plan contained here, measurements of doors, windows, rooms and any other items are approximate and no responsibility is taken for any error, omission, or mis-statement. an is for illustrative purposes only and should be used as such by any prospective purchaser. The services, systems and appliances shown have not been tested and no guarantee as to their operability or efficiency can be given.

