



## 14A Taverner Street BACCHUS MARSH VIC

3 2 2

Displaying an impressive blend of captivating modern features and contemporary style, the functionality of this beautifully designed home makes for a sensational first home or family domain located in the heart of Bacchus Marsh.

This home offers an amazing sense of space and luxury comprising of three bedrooms, with master suite including a large ensuite with vanity, oversized shower, toilet and built in robe.

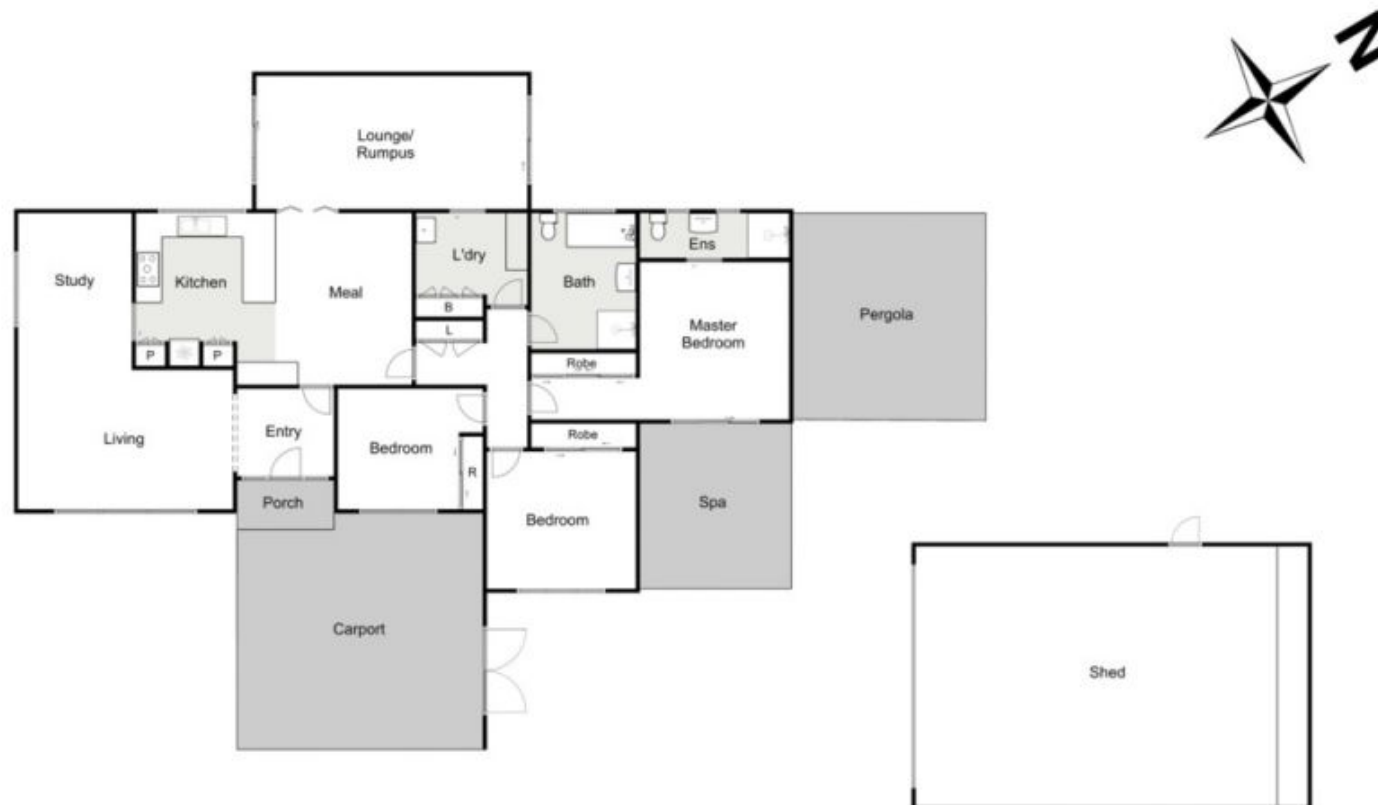
As you navigate seamlessly through to the heart of the home you are welcomed by the very spacious and light open plan kitchen, meals and lounge area. The very functionable kitchen features two good-sized built-in pantrys, dishwasher, stainless steel stove and oven. Adjacent to the kitchen you are greeted by a formal lounge room or the second and very convenient sitting room and a large study area making it perfect for the whole family.

**Land Size** : 943 sqm

**View** : <https://www.ypa.com.au/7383049>



**Shane O'Brien**  
0431 766 082



## 14A Taverner Street, Maddingley

every attempt has been made to ensure the accuracy of the floor plan contained here, measurements of doors, windows, rooms and any other items are approximate and no responsibility is taken for any error, omission, or mis-statement. an is for illustrative purposes only and should be used as such by any prospective purchaser. The services, systems and appliances shown have not been tested and no guarantee as to their operability or efficiency can be given.

