



63 Darcy Street Maddingley VIC

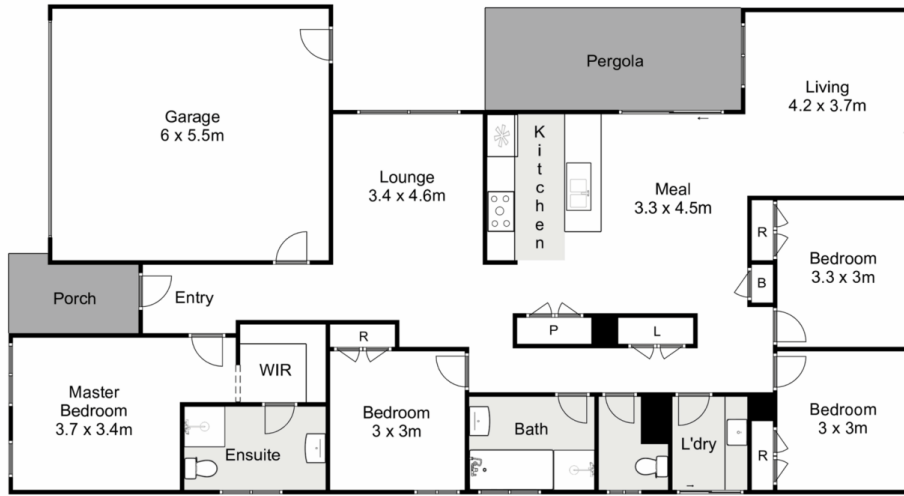
4  2  2 

Positioned in the Hill View Estate
Block size of 550m² (approx.)
Four bedrooms, master bedroom offers a walk in wardrobe and ensuite. Remaining bedrooms with BIR's
Two living spaces, one separate lounge area while the second living room is open plan to the kitchen and meals area.
The kitchen offers stainless steel appliances.
Covered entertaining area
Landscaped gardens to front & rear yards
Heating and cooling
Double garage
Alarm system
Within 1.6km of Bacchus Marsh West Golf Club, 1.3km from Maddingley Medical Centre and 3.3km from Bacchus Marsh train station

Land Size : 550 sqm
View : <https://www.ypa.com.au/7383448>



Monika Davies
0404 587 377



63 Darcy Street, Maddingley

YPA

Whilst every attempt has been made to ensure the accuracy of the floor plan contained here, measurements of doors, windows, rooms and any other items are approximate and no responsibility is taken for any error, omission, or mis-statement. This plan is for illustrative purposes only and should be used as such by any prospective purchaser. The services, systems and appliances shown have not been tested and no guarantee as to their operability or efficiency can be given.

