



## 96 Masons Lane Bacchus Marsh VIC

3 1 3

Positioned on a 791m2 (Approx) corner block  
Within close proximity to all levels of schooling, medical clinics, freeway access and Main Street/Town Centre

Features include:

- ? Updated kitchen
- ? Separate living area
- ? Bathroom with corner spa bath
- ? Three bedrooms, master with WIR and remaining bedrooms with BIR's.

? Covered Alfresco Area, surrounded by gardens

Special features include:

- ? Evaporative cooling
- ? Ducted Heating
- ? Established gardens
- ? Double garage
- ? Single Carport space

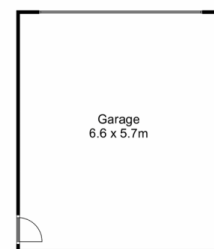
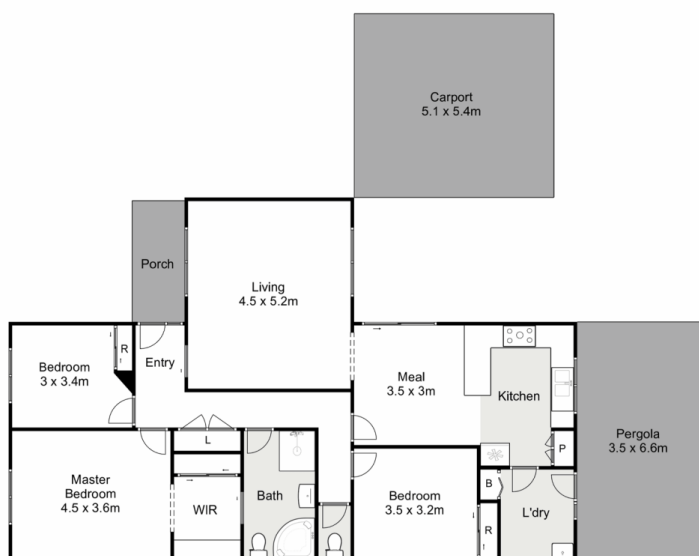
**View :** <https://www.ypa.com.au/7383489>



**Monika Davies**  
0404 587 377



**Courtney Parfrey**  
0450 554 071



## 96 Masons Lane, Bacchus Marsh

ypa

Whilst every attempt has been made to ensure the accuracy of the floor plan contained here, measurements of doors, windows, rooms and any other items are approximate and no responsibility is taken for any error, omission, or mis-statement. This plan is for illustrative purposes only and should be used as such by any prospective purchaser. The services, systems and appliances shown have not been tested and no guarantee as to their operability or efficiency can be given.

