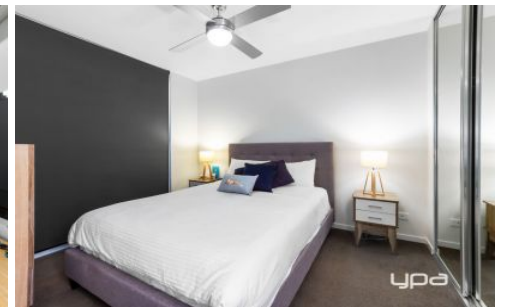
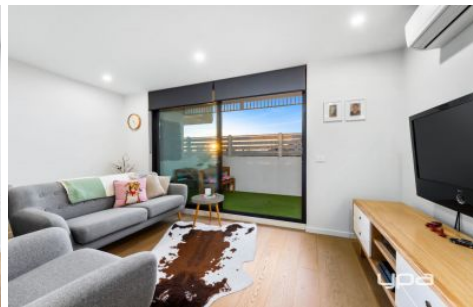


Ypa



204/973-975 Mount Alexander Road Essendon VIC

2  1  1 

YPA Caroline Springs presents this luxurious living apartment, right in the heart of Essendon!

Comprising of 2 spacious bedrooms and an open plan living and dining room, this is sure to impress upon the first inspection! The master is generously sized, with sliding door access to a private balcony.

A modern kitchen, equipped with quality stainless steel appliances is sure to accommodate for all needs, alongside an open plan living and dining area. A central bathroom is present, with the laundry facilities within the bathroom to add to the convenience of the apartment.

Added extras of this immaculately presented home include an undercover car space, reverse cycle air conditioning and a secure intercom entry with lift access.

Within walking distance to Keilor Road- facilitating for cafes, restaurants and shopping essentials. Also within close proximity to parklands, schools and tram stop perfect

View : <https://www.ypa.com.au/7385685>