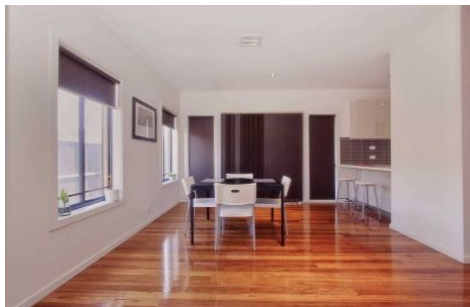
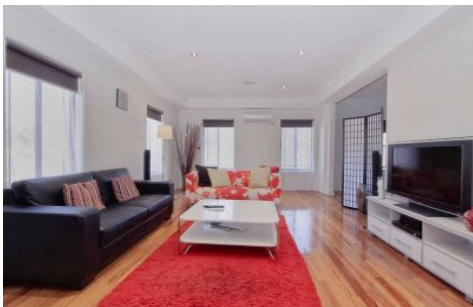


ypa



3 Appletree Grove CAIRNLEA VIC

3  2  2 

This townhouse comes with hardwood timber flooring, offering 3 spacious bedrooms, master bedroom with WIR and full ensuite, downstairs powder room, central kitchen, open meals and family area. Other features include ducted heating, high ceilings also comes with split system air con, double garage and retreat area/study upstairs with not just one but two balconies. Stroll to the shopping centre, parks, school and lake it is a TOP location. Call NOW to book in an inspection TODAY.

View : <https://www.ypa.com.au/7385845>