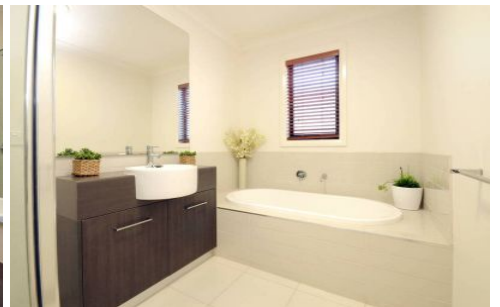
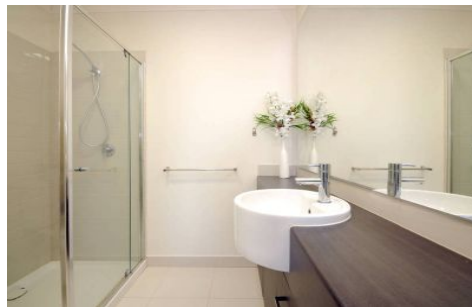


# ypa



**13 Belleville Close BURNSIDE HEIGHTS VIC**

4 2 2

One out of the box!

A sensational home in a fantastic location within walking distance to two shopping centres and public transport that will surely impress. Whether it's a low maintenance home or an investment opportunity you're after; all bases are covered here. 4 extra large bedrooms, ensuite/bathroom to master, great sized open-plan living area with modern kitchen complete with stone bench tops and bamboo flooring, garage with internal access, ducted heating and cooling, alarm system and security cameras. Opening to a spacious rear yard with a stunning Alfresco area to entertain all year round. It's new, it's modern and it could be yours!

**View** : <https://www.ypa.com.au/7386056>



**Joel Rawle**  
**0416 165 473**