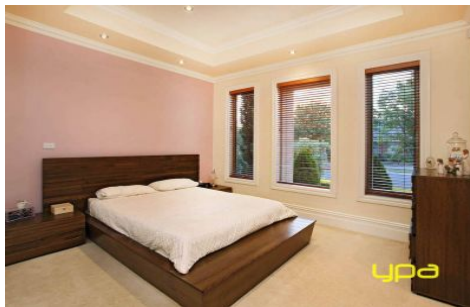


# ypa



**13 Blenheim Way CAROLINE SPRINGS VIC**

**3  2  2 **

Welcome to a home that masterfully merges exquisite period elegance, distinct contemporary style and an impressive street presence, set in the prestigious Grove Estate, moments from Caroline Springs town centre, parks, public transport, schools and freeway access.

This stunning home is built with impeccable attention to detail, and displays perfectly timeless heritage grandeur, together with free flowing sun bathed contemporary zones dedicated to luxurious family living and opulent entertaining. This magnificent residence affords a gracious formal lounge with study area and boasts three spacious bedrooms (all with BIR's), (main with full ensuite), with both bathrooms distinctly hotel luxury style with floor to ceiling tiles, all leading seamlessly to a vast and breathtaking open plan family dining and sitting room of distinction. With three meter high ceilings, opening to picturesque outdoor entertaining with large pergola area through bi-fold doors. A

**View :** <https://www.ypa.com.au/7386059>